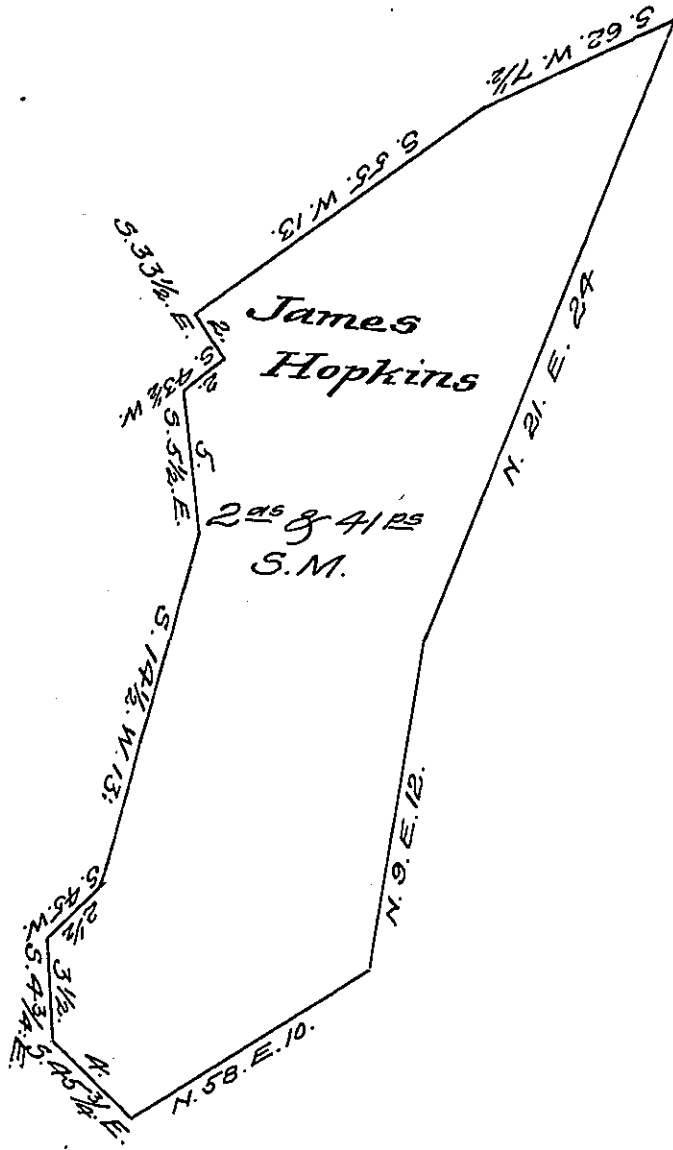


York County Shore.



Lancaster County Shore.

A Draught of an Island situate in the river Susquehanna Donegal township Lancaster County called Buonaparte in the head of Conewago falls about twenty or thirty perches below the mouth of Conewago Creek and about thirty five or forty perches from Elliotts Islands Containing two acres and forty one perches Strict Measure surveyed in pursuance of a Warrant dated the 18th day of December A.D. 1816 granted to James Hopkins

p^r Jacob Hiestman D.S.

To Jacob Spangler Esq. }
 Surveyor General. }

IN TESTIMONY that the above is a copy of the original remaining on file in the Department of Internal Affairs of Pennsylvania, made conformably to an Act of Assembly approved the 16th day of February 1833, I have hereunto set my hand and caused the Seal of said Department to be affixed at Harrisburg, this thirteenth day of January 1908.

Henry Horvath
 Secretary of Internal Affairs.